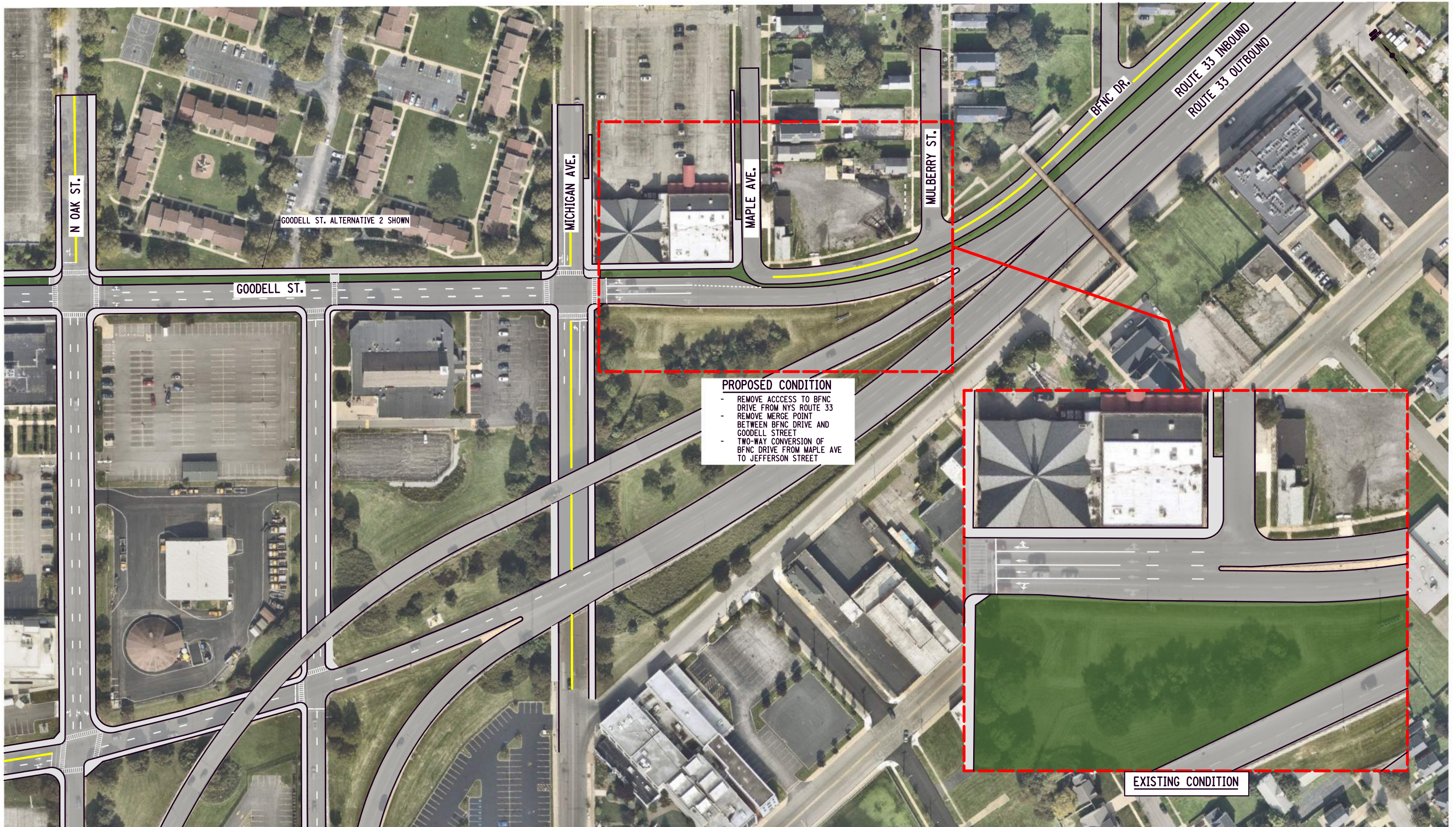


Appendix F – Concept Drawings

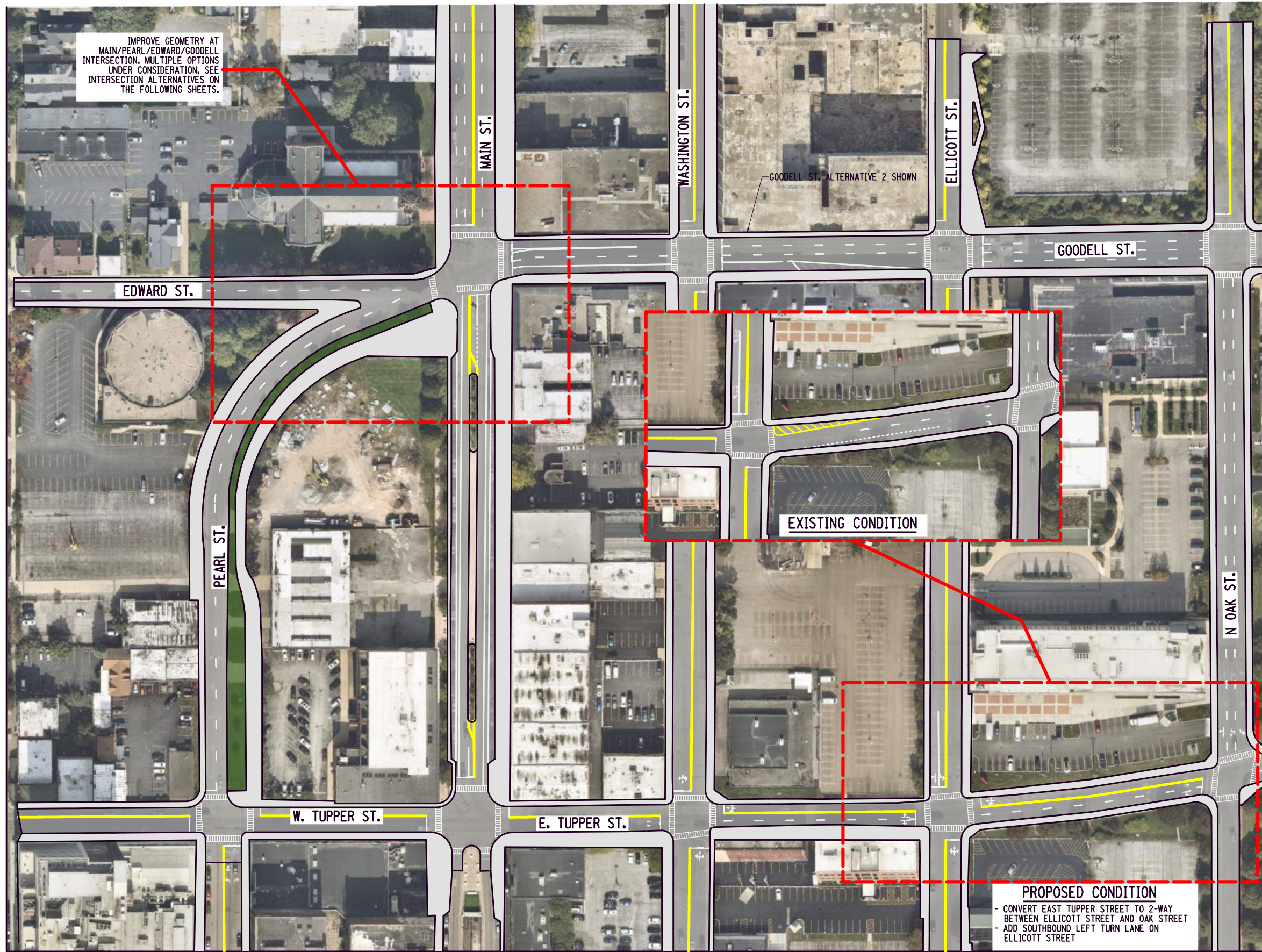


**GOODELL STREET CORRIDOR STUDY
PROPOSED GEOMETRIC CHANGES FOR ALTERNATIVES 2-4**

SEPTEMBER 2022

C&S Engineers, Inc.
141 Elm Street, Suite 100
Buffalo, New York 14203
Phone: 716-847-1630
Fax: 716-847-1454
www.cscos.com





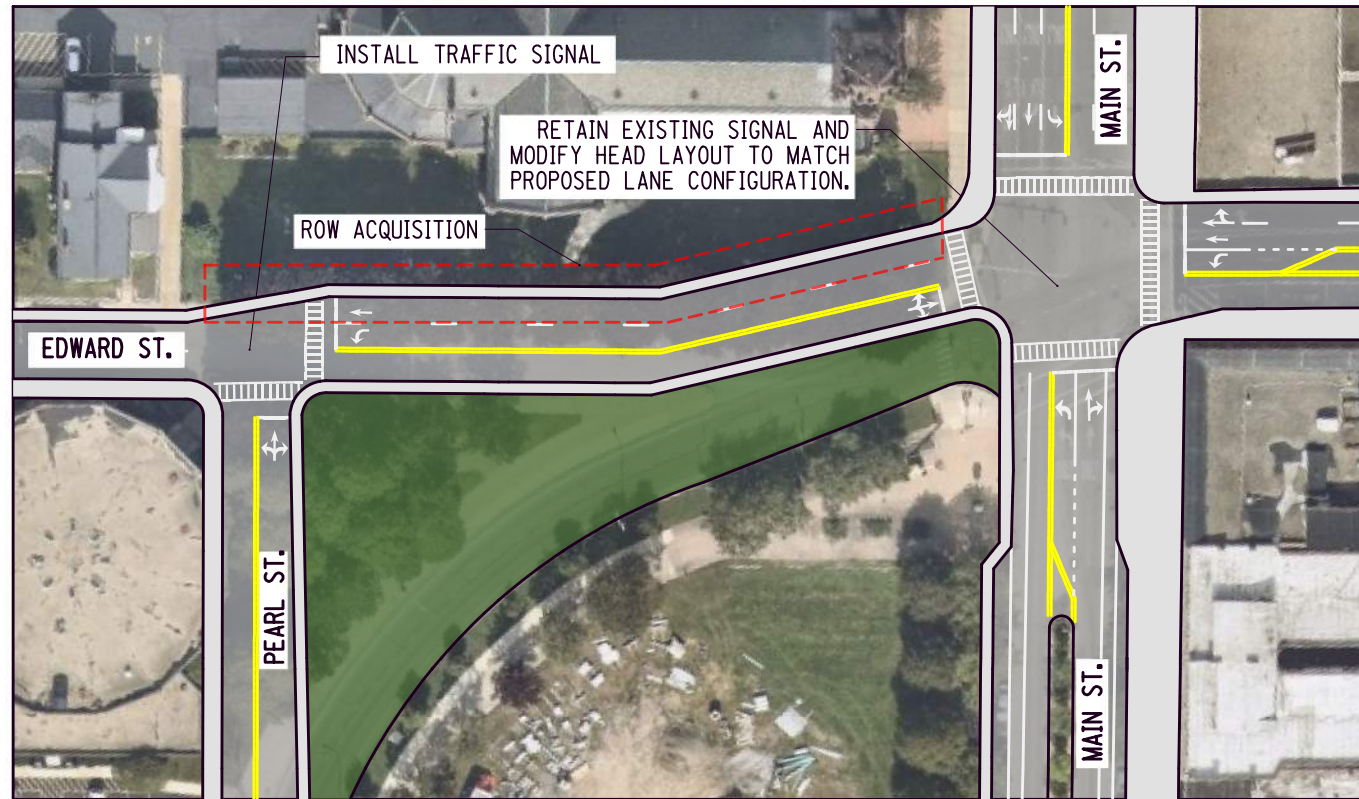
GOODELL STREET CORRIDOR STUDY
PROPOSED GEOMETRIC CHANGES FOR ALTERNATIVES 2-4

SEPTEMBER 2022

SHEET 2 OF 2

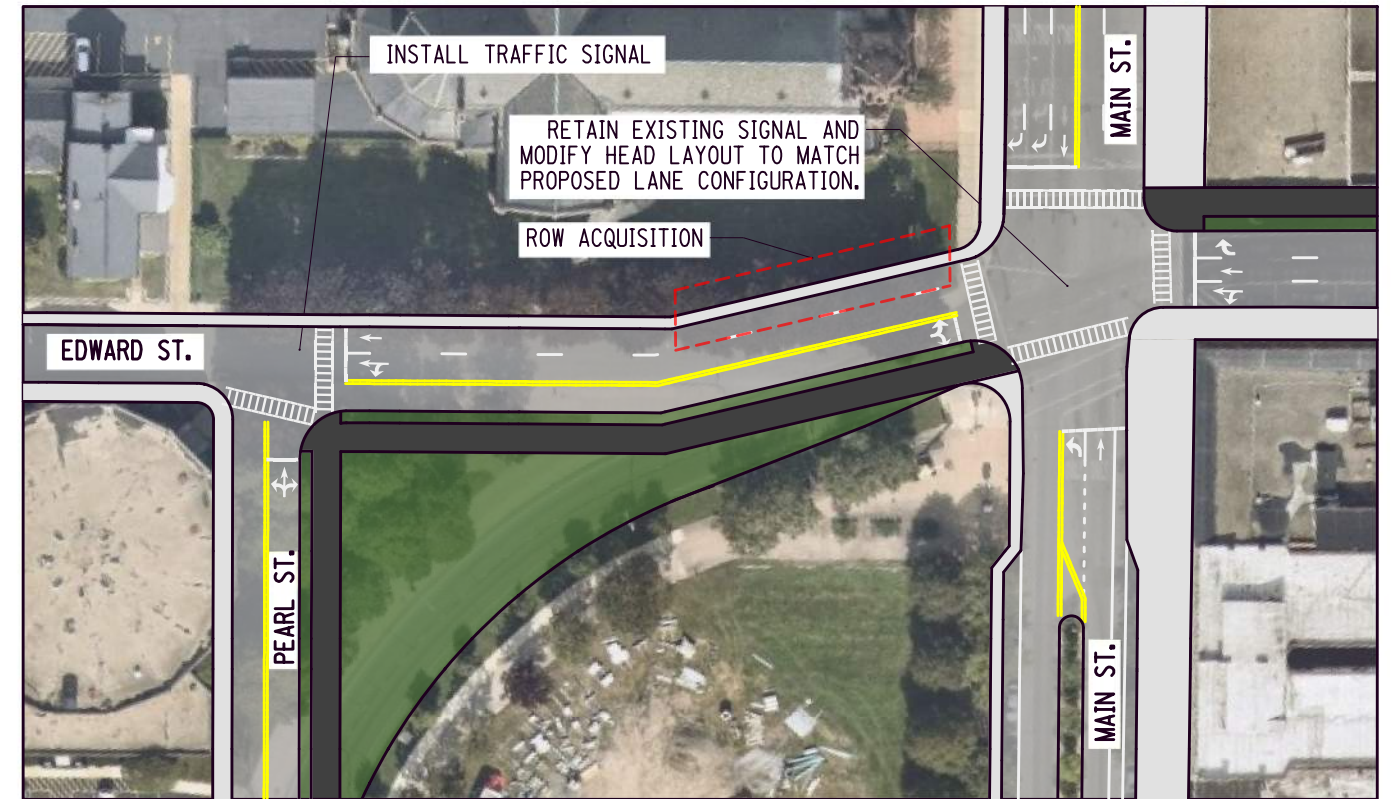
C&S Engineers, Inc.
 141 Elm Street, Suite 100
 Buffalo, New York 14203
 Phone: 716-847-1630
 Fax: 716-847-1454
 www.cscos.com





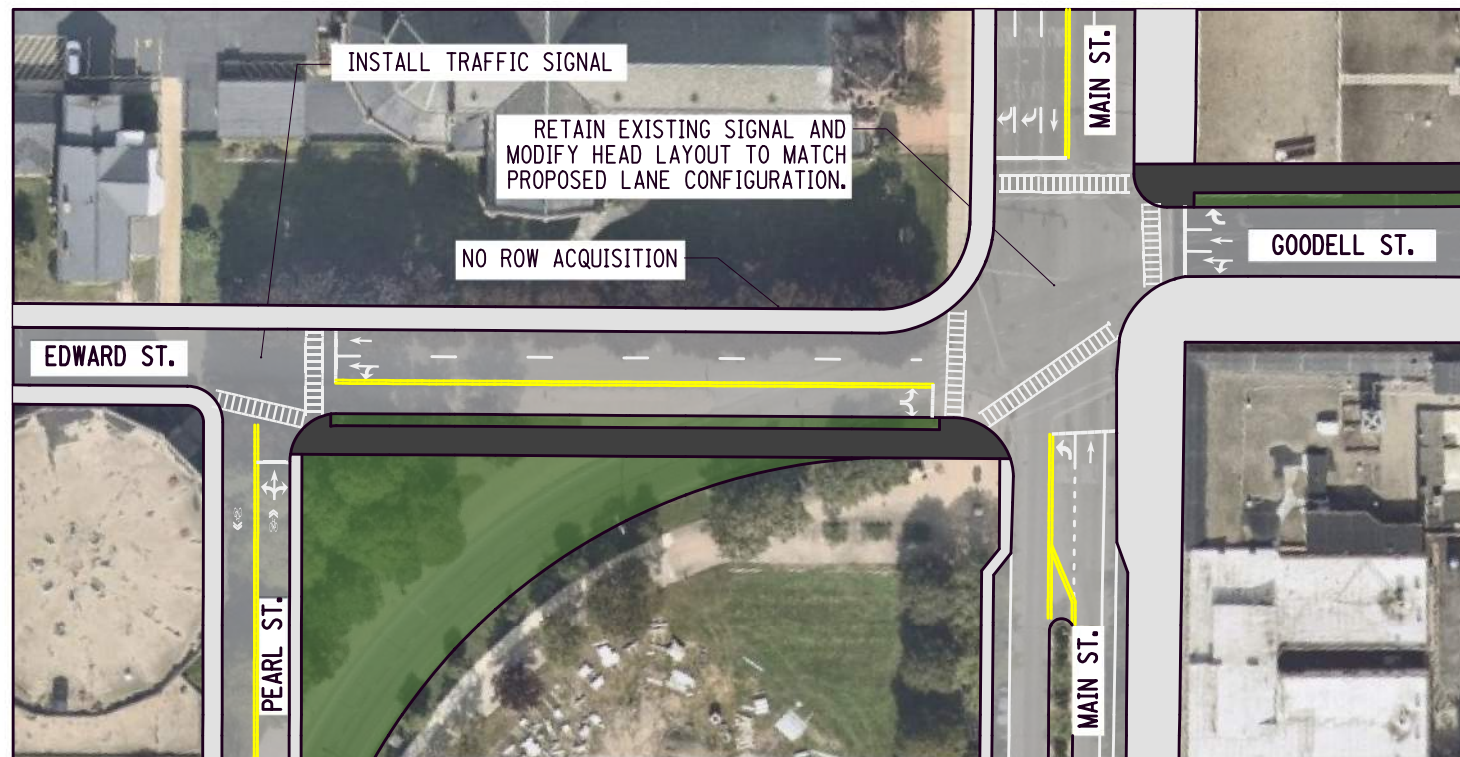
OPTION 1

PEARL ST. RE-ALIGNED PERPENDICULAR TO EDWARD ST. CONVERT EDWARD ST. AND PEARL ST. TO TWO-WAY TRAVEL FROM MAIN STREET TO TUPPER ST. WESTBOUND LANE ADDED ON THE NORTH SIDE OF EDWARD ST. ROW ACQUISITION REQUIRED. GODELL ST, ALTERNATIVE 4 SHOWN.



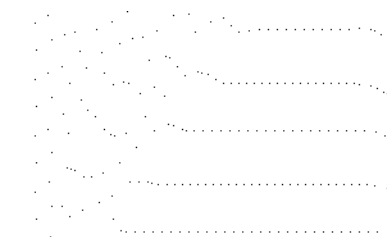
OPTION 2

PEARL ST. RE-ALIGNED PERPENDICULAR TO EDWARD ST. CONVERT EDWARD ST. AND PEARL ST. TO TWO-WAY TRAVEL FROM MAIN ST. TO TUPPER ST. EASTBOUND LANE ADDED ON THE SOUTH SIDE OF EDWARD ST. ROW ACQUISITION REQUIRED. GODELL ST, ALTERNATIVE 3 SHOWN.



OPTION 3

PEARL ST. RE-ALIGNED PERPENDICULAR TO EDWARD ST. CONVERT EDWARD ST. AND PEARL ST. TO TWO-WAY TRAVEL FROM MAIN ST. TO TUPPER ST. EASTBOUND LANE ADDED ON THE SOUTH SIDE OF EDWARD ST. NO ROW ACQUISITION REQUIRED. GODELL ST, ALTERNATIVE 3 SHOWN.



GODELL STREET CORRIDOR STUDY

GODELL/MAIN/PEARL/EDWARD INTERSECTION ALTERNATIVES

SEPTEMBER 2022

SHEET 1 OF 3

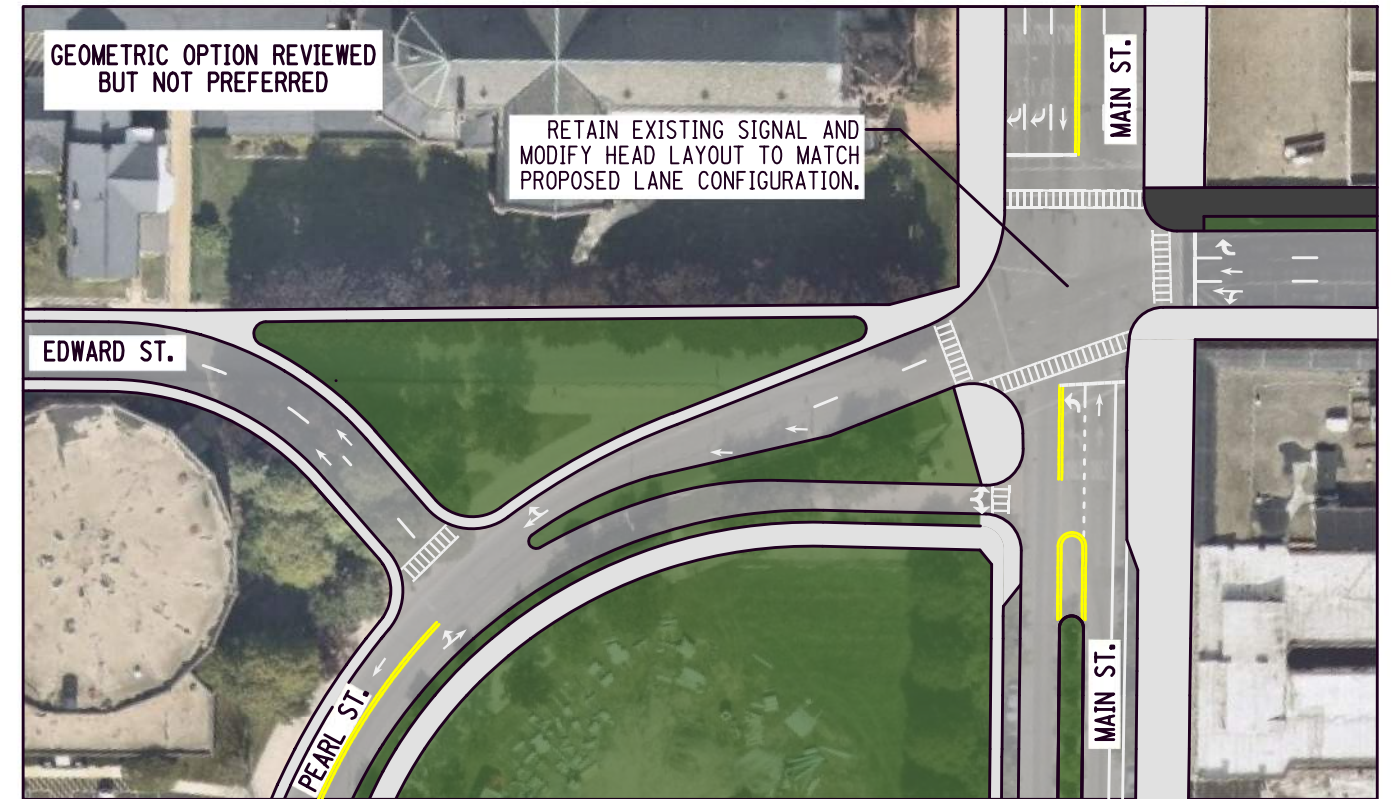
C&S Engineers, Inc.
 141 Elm Street, Suite 100
 Buffalo, New York 14203
 Phone: 716-847-1630
 Fax: 716-847-1454
 www.cscos.com





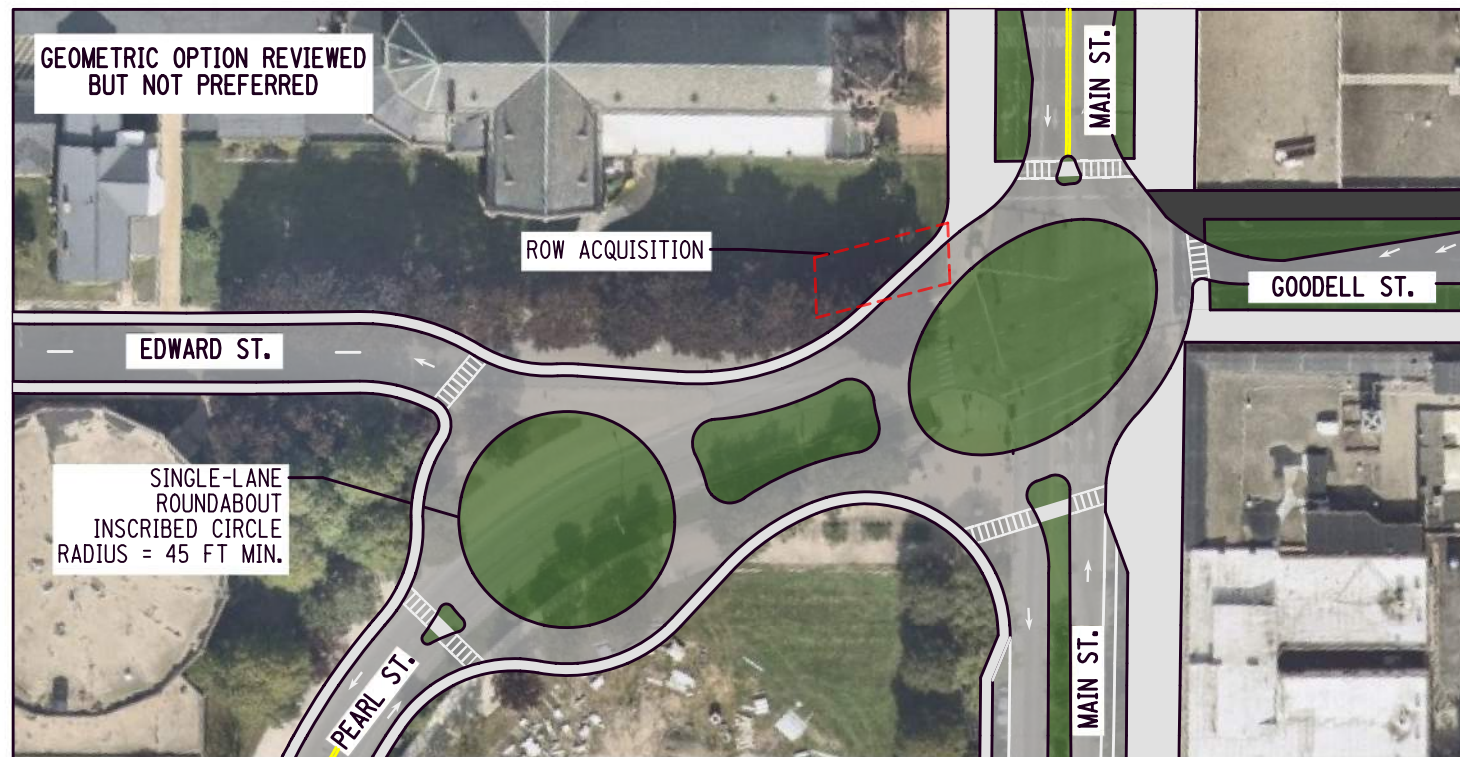
OPTION 4

EDWARD ST. RE-ALIGNED PERPENDICULAR TO PEARL ST. PEARL ST. AND EDWARD ST. REMAIN ONE-WAY WESTBOUND. GOODELL ST, ALTERNATIVE 3 SHOWN.



OPTION 5

EDWARD ST. RE-ALIGNED PERPENDICULAR TO PEARL ST. CONVERT PEARL ST. TO TWO-WAY TRAVEL FROM MAIN ST. TO TUPPER ST. EDWARD ST. REMAINS ONE-WAY WESTBOUND. GOODELL ST, ALTERNATIVE 3 SHOWN.

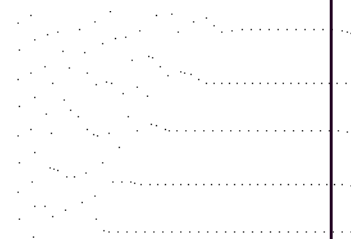
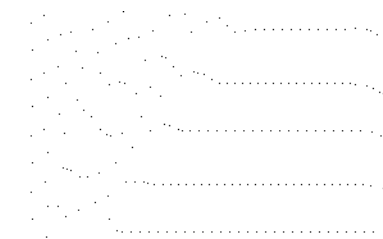


OPTION 6

DUAL-SINGLE LANE ROUNDABOUTS. CONVERT PEARL ST. TO TWO-WAY TRAVEL FROM MAIN ST. TO TUPPER ST. GOODELL ST, ALTERNATIVE 3 SHOWN.

THESE OPTIONS WERE IDENTIFIED AS NOT PREFERRED DUE TO:

1. PLACING AN INTERSECTION ON A HORIZONTAL CURVE CAN CREATE A SAFETY PROBLEM.
2. THERE ARE LIMITATIONS TO ACCOMMODATE THE POTENTIAL OF CONVERTING PEARL ST. TO TWO-WAY.
3. ROUNDABOUTS ARE DIFFICULT FOR PEDESTRIANS AND BICYCLISTS TO NAVIGATE, ESPECIALLY WITH HIGH TRAFFIC VOLUMES.



GOODELL STREET CORRIDOR STUDY
GOODELL/MAIN/PEARL/EDWARD INTERSECTION ALTERNATIVES

SEPTEMBER 2022

SHEET 2 OF 3

C&S Engineers, Inc.
 141 Elm Street, Suite 100
 Buffalo, New York 14203
 Phone: 716-847-1630
 Fax: 716-847-1454
 www.cscos.com





OPTION 7
 PEARL ST. RE-ALIGNED PERPENDICULAR TO EDWARD ST. CONVERT PEARL ST. TO TWO-WAY TRAVEL FROM EDWARD ST. TO TUPPER ST. EDWARD ST. REMAINS ONE-WAY WESTBOUND. ROW ACQUISITION REQUIRED. GOODELL ST, ALTERNATIVE 3 SHOWN.



OPTION 8
 PEARL ST. RE-ALIGNED PERPENDICULAR TO EDWARD ST. CONVERT EDWARD ST. AND PEARL ST. TO TWO-WAY TRAVEL FROM MAIN ST. TO TUPPER ST. EASTBOUND LANE ADDED ON THE SOUTH SIDE OF EDWARD ST. ROW ACQUISITION REQUIRED. GOODELL ST, ALTERNATIVE 3 SHOWN.



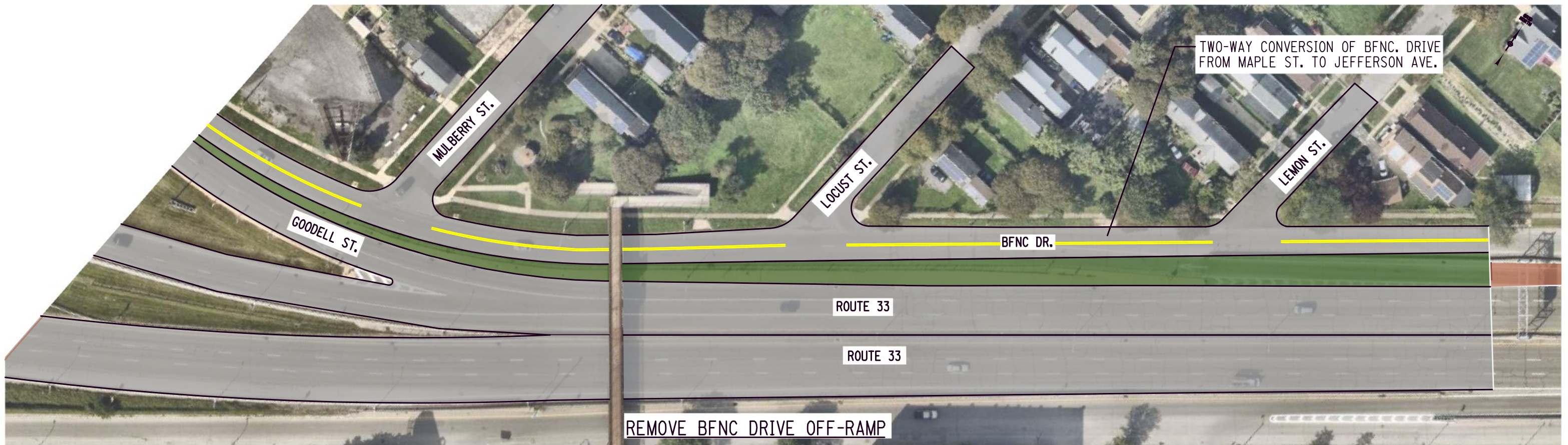
GOODELL STREET CORRIDOR STUDY
GOODELL/MAIN/PEARL/EDWARD INTERSECTION ALTERNATIVES

SEPTEMBER 2022

SHEET 3 OF 3

C&S Engineers, Inc.
 141 Elm Street, Suite 100
 Buffalo, New York 14203
 Phone: 716-847-1630
 Fax: 716-847-1454
 www.cscos.com





GOODELL STREET CORRIDOR STUDY
ALTERNATIVE 2 - ROAD DIET ON GOODELL STREET TO 3 LANES

SEPTEMBER 2022

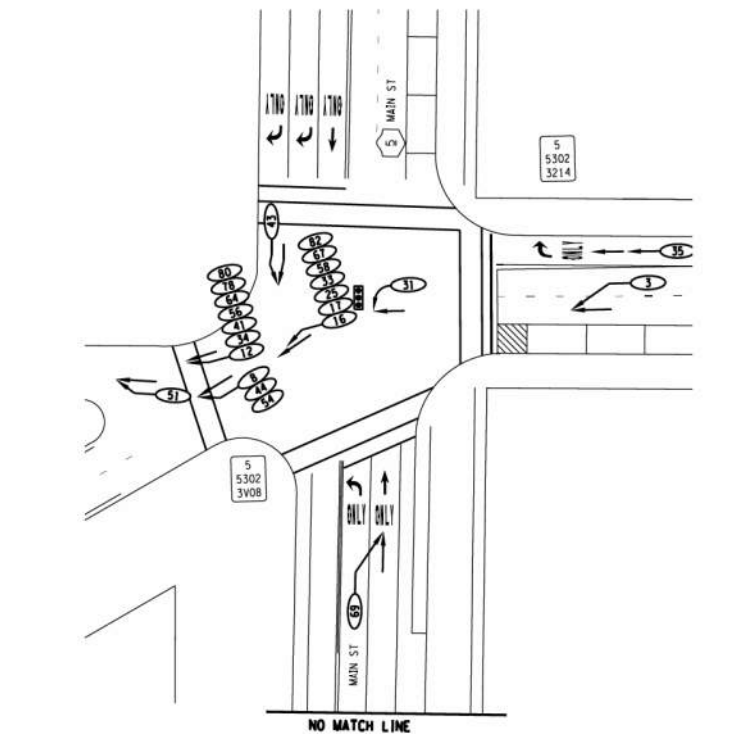
SHEET 1 OF 2

C&S Engineers, Inc.
 141 Elm Street, Suite 100
 Buffalo, New York 14203
 Phone: 716-847-1630
 Fax: 716-847-1454
 www.cscos.com

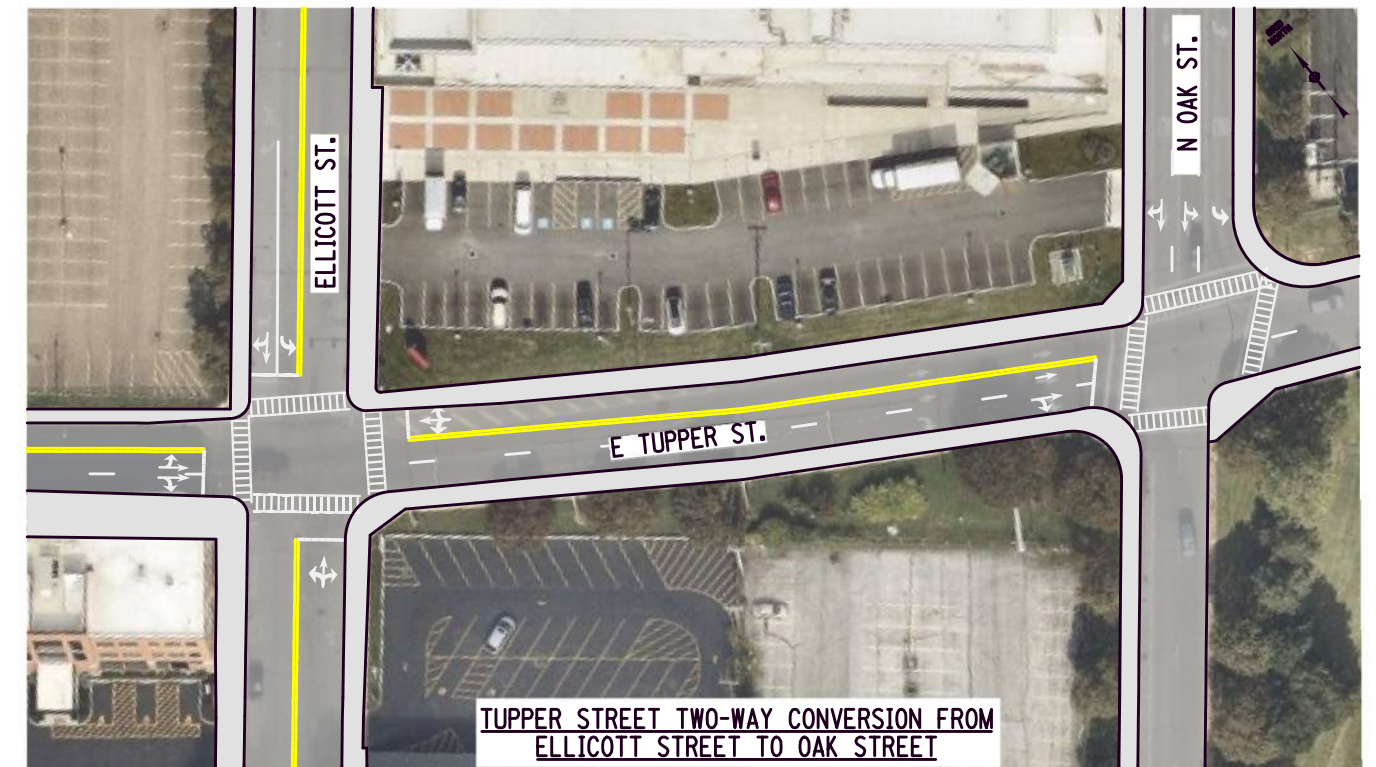




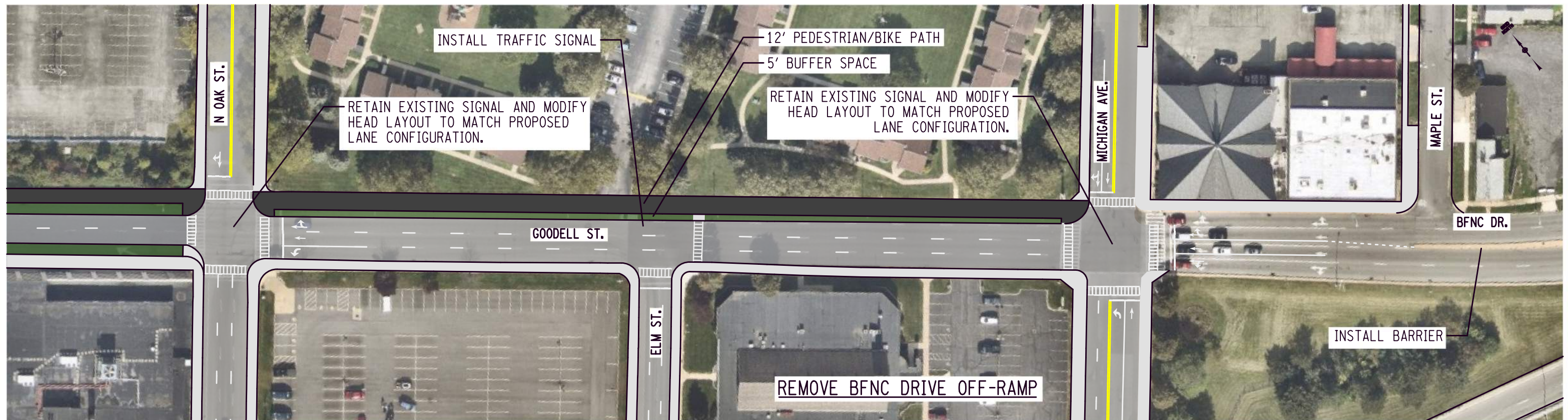
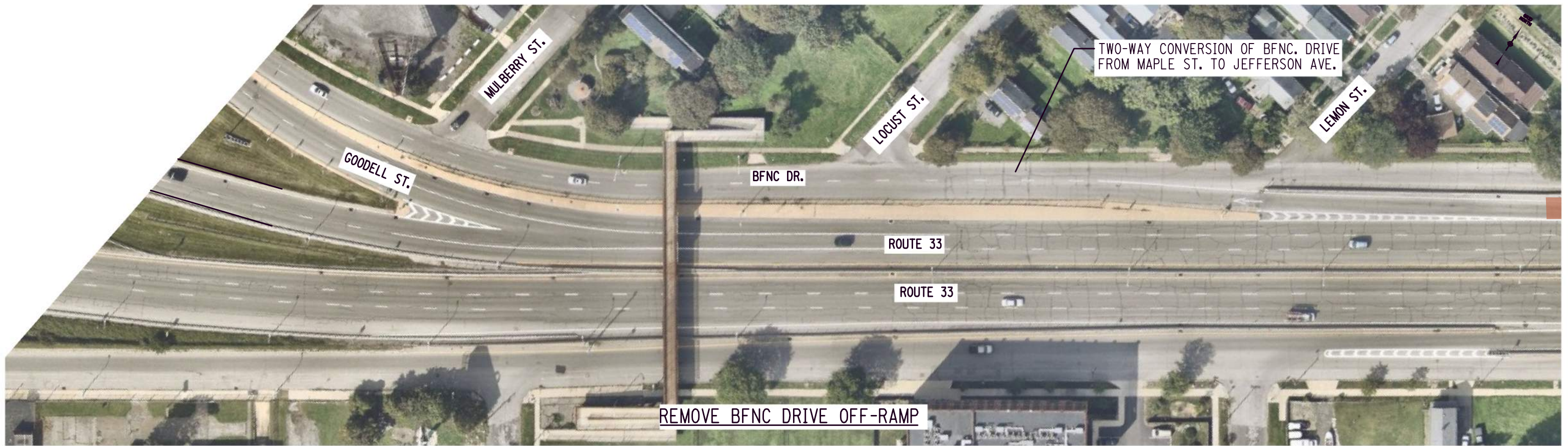
PEARL STREET REALIGNMENT AND TWO-WAY CONVERSION



ACCIDENT DETAIL		SYMBOLS	
TYPE OF ACCIDENT (SEE LEGEND)	KEY NUMBER (SEE FORM TE 213)	MOVING VEHICLE	F - FATAL INJURY
NUMBER OF VEHICLES		BACKING VEHICLE	PEDESTRAIN
		STOPPED VEHICLE	BICYCLE
		PARKED VEHICLE	MOTORCYCLE
		FIXED OBJECT	DEER



TUPPER STREET TWO-WAY CONVERSION FROM ELLICOTT STREET TO OAK STREET



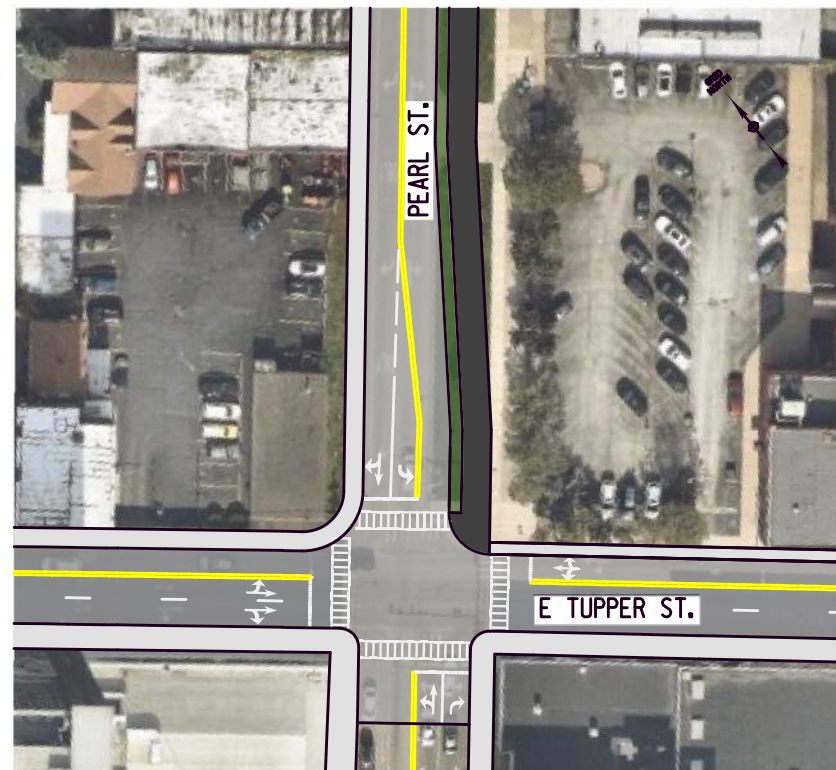
GOODPELL STREET CORRIDOR STUDY
ALTERNATIVE 3 - ROAD DIET ON GOODPELL STREET TO 2 LANES

SEPTEMBER 2022

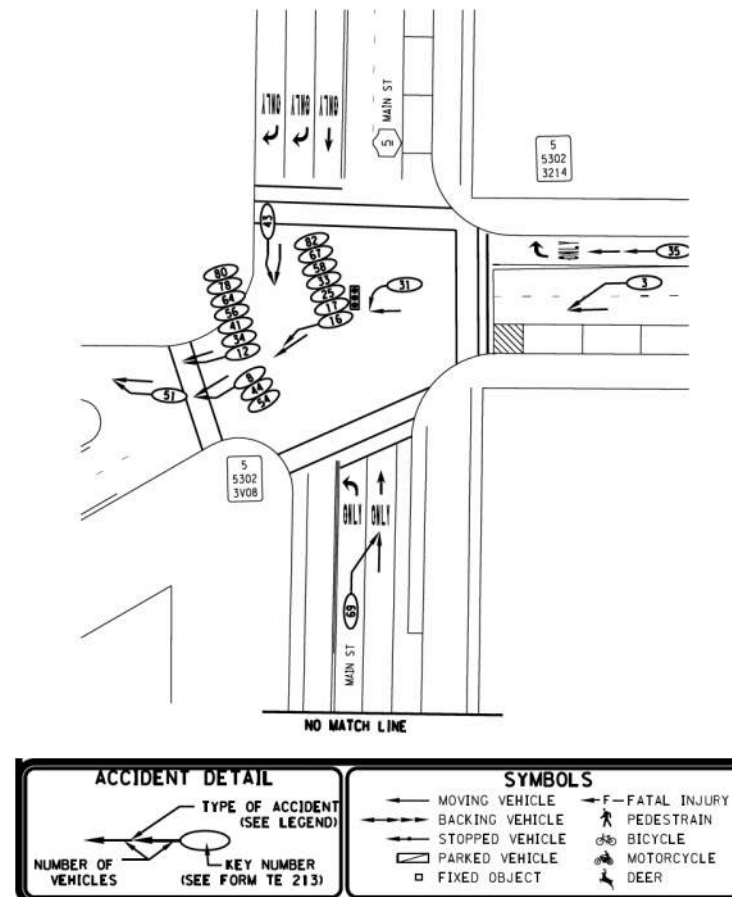
SHEET 1 OF 2

C&S Engineers, Inc.
 141 Elm Street, Suite 100
 Buffalo, New York 14203
 Phone: 716-847-1630
 Fax: 716-847-1454
 www.cscos.com





PEARL STREET REALIGNMENT AND TWO-WAY CONVERSION



TUPPER STREET TWO-WAY CONVERSION FROM ELLICOTT STREET TO OAK STREET

GOODPELL STREET CORRIDOR STUDY

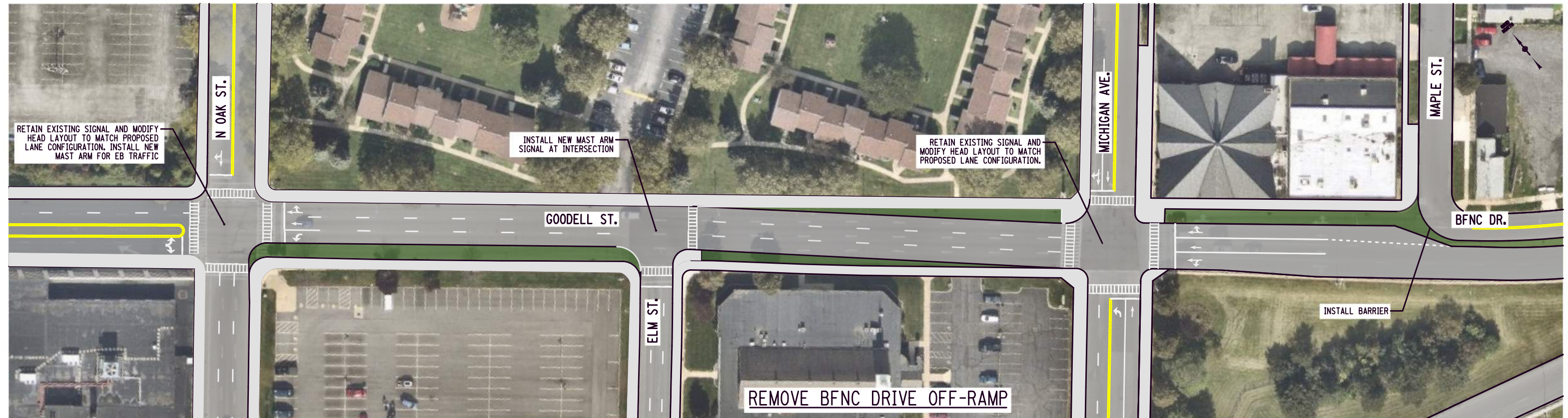
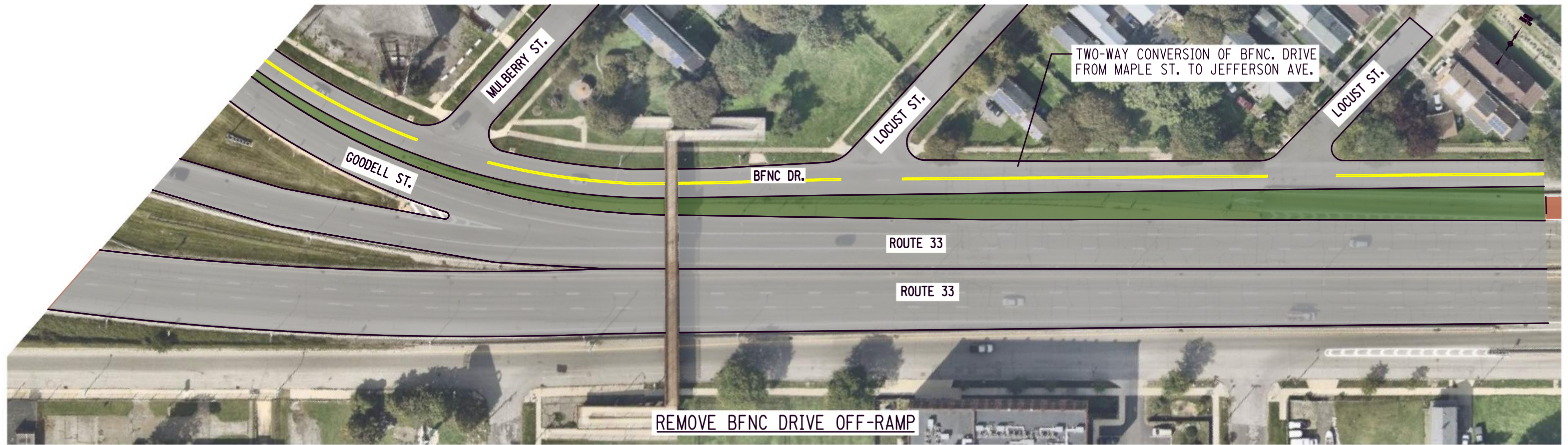
ALTERNATIVE 3 - ROAD DIET ON GOODPELL STREET TO 2 LANES

SEPTEMBER 2022

SHEET 2 OF 2

C&S Engineers, Inc.
 141 Elm Street, Suite 100
 Buffalo, New York 14203
 Phone: 716-847-1630
 Fax: 716-847-1454
 www.cscos.com





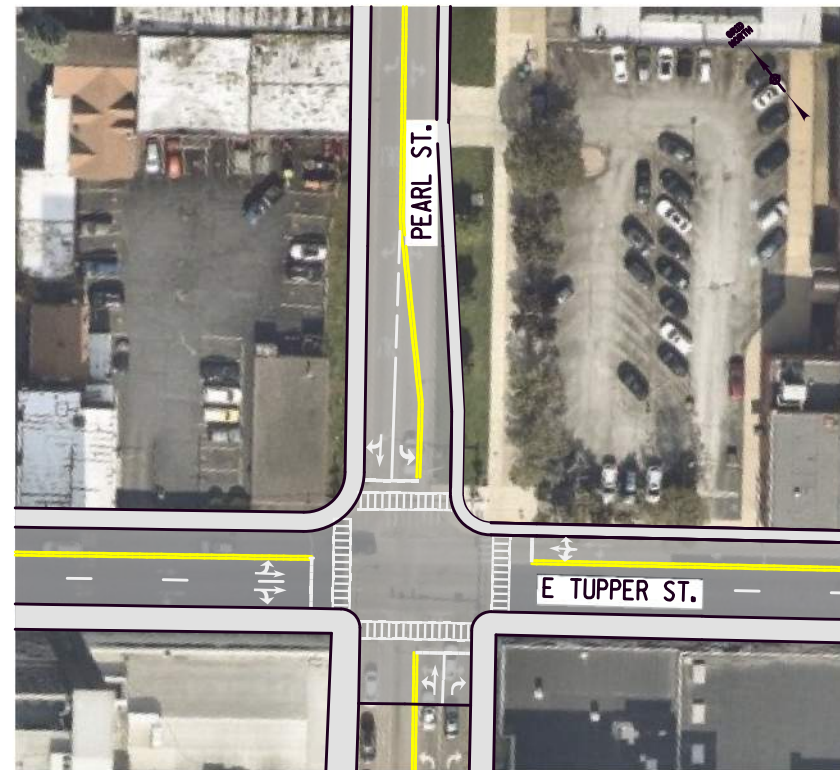
GOODSELL STREET CORRIDOR STUDY
ALTERNATIVE 4 - GOODSELL STREET ONE-WAY TO TWO-WAY CONVERSION

SEPTEMBER 2022

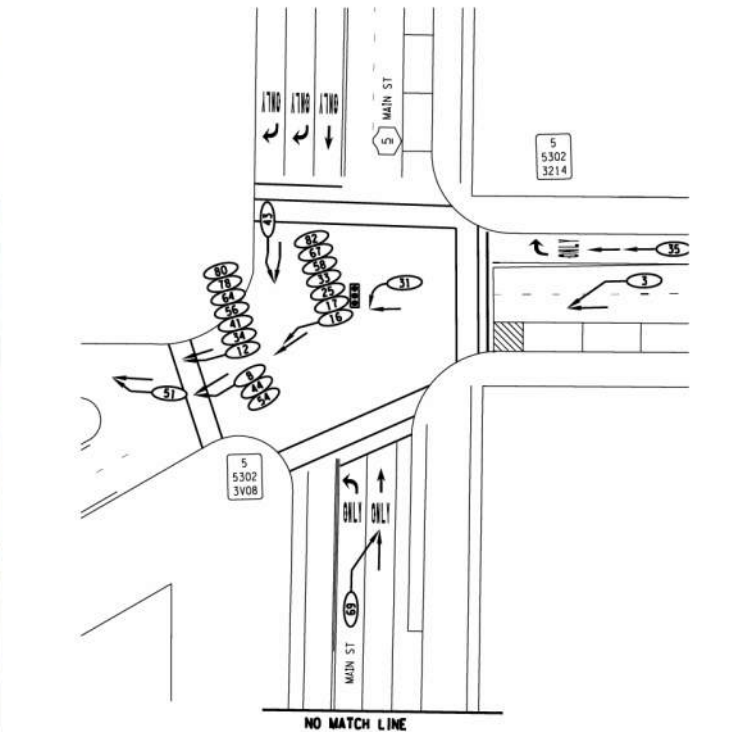
SHEET 1 OF 2

C&S Engineers, Inc.
 141 Elm Street, Suite 100
 Buffalo, New York 14203
 Phone: 716-847-1630
 Fax: 716-847-1454
 www.cscos.com

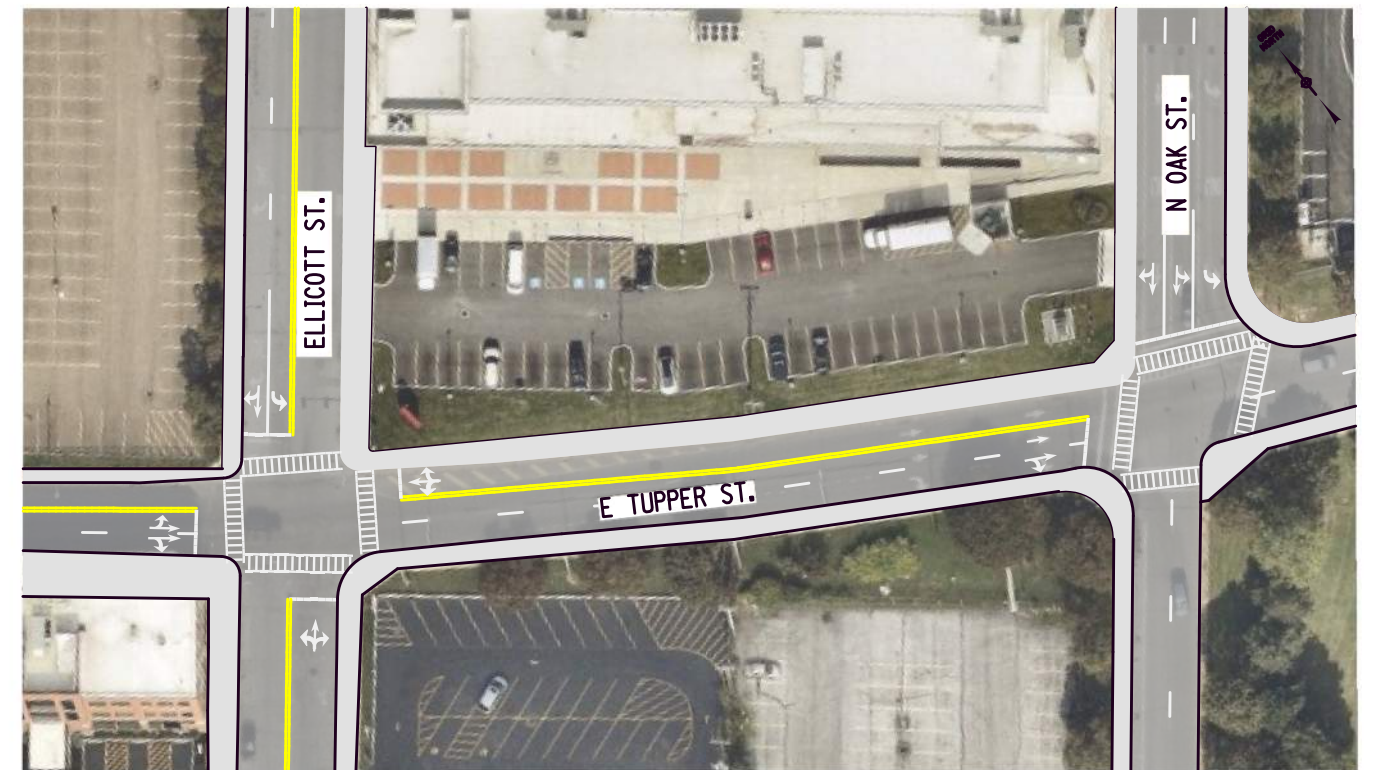




PEARL STREET REALIGNMENT AND TWO-WAY CONVERSION



ACCIDENT DETAIL		SYMBOLS	
TYPE OF ACCIDENT (SEE LEGEND)	KEY NUMBER (SEE FORM TE 213)	MOVING VEHICLE	FATAL INJURY
NUMBER OF VEHICLES		BACKING VEHICLE	PEDESTRIAN
		STOPPED VEHICLE	BICYCLE
		PARKED VEHICLE	MOTORCYCLE
		FIXED OBJECT	DEER



TUPPER STREET TWO-WAY CONVERSION FROM ELLCOTT STREET TO OAK STREET



GOODELL STREET CORRIDOR STUDY

ALTERNATIVE 4 - GOODELL STREET ONE-WAY TO TWO-WAY CONVERSION

SEPTEMBER 2022

SHEET 2 OF 2

C&S Engineers, Inc.
 141 Elm Street, Suite 100
 Buffalo, New York 14203
 Phone: 716-847-1630
 Fax: 716-847-1454
 www.cscos.com





OPTION 7
 PEARL ST. RE-ALIGNED PERPENDICULAR TO EDWARD ST. CONVERT PEARL ST. TO TWO-WAY TRAVEL FROM EDWARD ST. TO TUPPER ST. EDWARD ST. REMAINS ONE-WAY WESTBOUND. ROW ACQUISITION REQUIRED. GOODELL ST, ALTERNATIVE 3 SHOWN.



OPTION 8
 PEARL ST. RE-ALIGNED PERPENDICULAR TO EDWARD ST. CONVERT EDWARD ST. AND PEARL ST. TO TWO-WAY TRAVEL FROM MAIN ST. TO TUPPER ST. EASTBOUND LANE ADDED ON THE SOUTH SIDE OF EDWARD ST. ROW ACQUISITION REQUIRED. GOODELL ST, ALTERNATIVE 3 SHOWN.



GOODELL STREET CORRIDOR STUDY
GOODELL/MAIN/PEARL/EDWARD INTERSECTION ALTERNATIVES

MARCH 2023

SHEET 3 OF 3

C&S Engineers, Inc.
 141 Elm Street, Suite 100
 Buffalo, New York 14203
 Phone: 716-847-1630
 Fax: 716-847-1454
 www.cscos.com

