



Greater Buffalo Niagara Regional Transportation Council

## Environmental Resource Agency Consultation

Planning and Environmental Linkages (PEL) represent a collaborative and integrated approach to transportation decision making that considers environmental, community, and economic goals early in the planning stage and uses the analysis developed during planning to inform project design and the environmental review process.

This can lead to better design and infrastructure investments by foreseeing and mitigating potential negative environmental impacts. By minimizing duplicated work, PEL can help deliver transportation projects faster and more efficiently. This can also prevent unexpected delay that occurs when negative environmental impacts are identified in the later stages of project delivery.

The Greater Buffalo Niagara Regional Transportation Council (GBNRTC) works to incorporate PEL into its transportation plans in consultation with our local, state, federal, and resource agency partners. This MTP 2050 update includes data on natural, cultural, and community resources as well as land use patterns and environmental justice demographics.

As part of this update, the GBNRTC consulted, as appropriate, with State and local agencies responsible for land use management, natural resources, environmental protection, conservation, and historic preservation concerning the development of the metropolitan transportation plan update. Environmental considerations in planning requires certain elements and activities to be included in the development of metropolitan transportation plans, including:

- Consultations with resource agencies, such as those responsible for land-use management, natural resources, environmental protection, conservation and historic preservation; which shall involve, as appropriate, comparisons of resource maps and inventories
- Discussion of potential environmental mitigation activities

This approach to transportation decision-making considers environmental, community, and economic goals early in the planning stage and carries them through project development, design, and construction. This can lead to a more effective decision-making process that minimizes duplication of effort, promotes environmental stewardship, and reduces delays in project implementation.

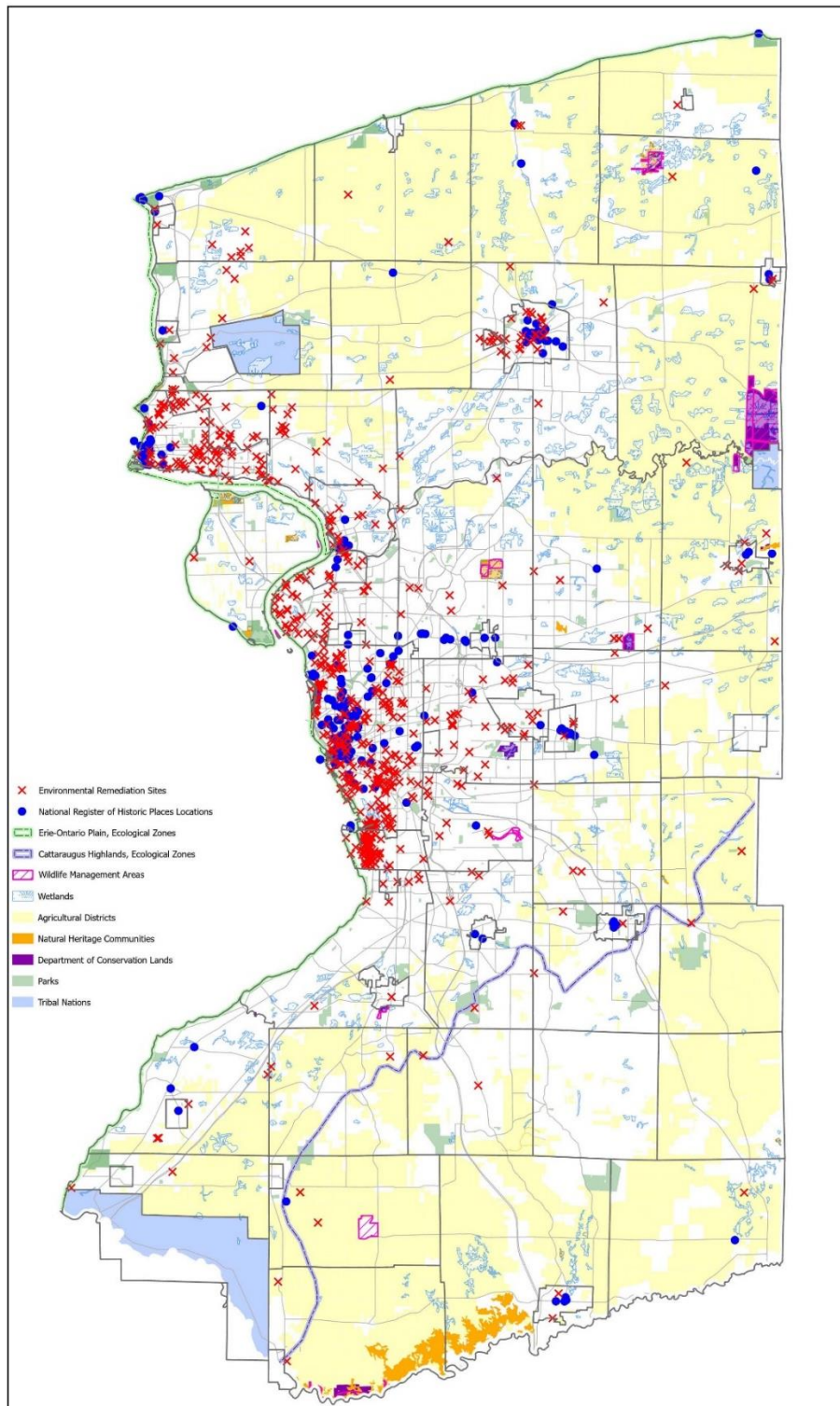
To address this requirement, the GBNRTC developed an agency consultation process that included the following steps:

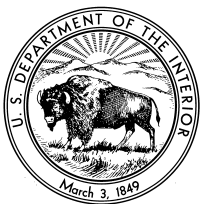
1. The GBNRTC incorporated relevant data and produced a number of maps included in the Plan that identified ecologically significant areas including wetlands, agricultural lands, Wildlife Management Areas (WMA), and parks, as well as areas of historic and cultural importance. The

materials gathered through this process were documented by the GBNRTC and reviewed by consulting agencies as part of the process.

2. The GBNRTC contacted Federal, State, Local, and Tribal agencies responsible for land use management, natural resources, environmental protection, conservation, and historic preservation to provide them with information regarding the GBNRTC and its activities and request their participation in the agency consultation process.
3. The GBNRTC initiated discussions with consulting agencies regarding possible mitigation activities identified in the Plan update. Mitigation activities are discussed in Chapter 2 of the Plan. Consulting agencies were asked to review materials and provide feedback to the GBNRTC.
  - Buffalo Niagara Waterkeeper
  - Buffalo Sewer Authority
  - City of Buffalo Strategic Planning
  - Empire State Development
  - Erie County Department of Environment and Planning
  - National Park Service
  - New York State Department of Health
  - Niagara County Center for Economic Development
  - NYS Historic Preservation Office
  - NYS Office of Parks, Recreation, and Historic Preservation
  - Preservation Buffalo Niagara
  - Seneca Nation of Indians
  - Tonawanda Seneca Nation
  - Tuscarora Nation
  - U.S. Army Corps of Engineers
  - University at Buffalo (UB) - Historic Preservation
  - US Department of Agriculture/Natural Resource Conservation Service
  - US Fish and Wildlife Service
  - NYS DEC
  - NYS Department of Agriculture
  - USEPA

## 2050 Metropolitan Transportation Plan Environmental Resource Map





# United States Department of the Interior

FISH AND WILDLIFE SERVICE

3817 Luker Road  
Cortland, New York 13045



Project Number: \_\_\_\_\_ Date: \_\_\_\_\_

To: \_\_\_\_\_

Project Name: \_\_\_\_\_

Town/County: \_\_\_\_\_

We have received your request for information regarding occurrences of federally listed threatened and endangered species within the vicinity of the above-referenced project/property. Please see the check box below that pertains to this project regarding next steps to take in order for your project to be reviewed by the U.S. Fish and Wildlife Service's (Service) New York Field Office (NYFO).

☐ **An official species list was not requested through IPaC.**

Next steps to take: Please log into the IPaC website at [IPaC: Home \(fws.gov\)](http://fws.gov) to obtain an official species list for the above-mentioned project. The NYFO cannot accept species lists that indicate they are "Not for Consultation." ***Project submittals will not be reviewed until official species list requests are obtained and the project is resubmitted.***

☐ **Insufficient project information was provided to complete our review.**

Next steps to take: Please go to the NYFO Project Review website at <https://www.fws.gov/office/new-york-ecological-services-field/new-york-project-reviews> and follow the instructions to complete our 7-Step process before submitting a project for our review. To ensure that all pertinent project information has been submitted for Endangered Species Act (ESA) (87 Stat. 884, as amended; 16 U.S.C. 1531 *et seq.*) review, please use the Project Review Submittal Checklist found here: <https://www.fws.gov/media/project-submittal-checklist>. ***Project submittals will not be reviewed until all pertinent project information has been submitted.***

\*If you do not have access to online resources, please coordinate with the NYFO for assistance at 607-753-9334.

**\*\*It is preferred that all project reviews be submitted via email at [fw5es\\_nyfo@fws.gov](mailto:fw5es_nyfo@fws.gov).**  
If you cannot submit documents electronically, please mail them to the NYFO at the address at the top of this page.

As a reminder, sections 9 and 4(d) of the ESA establish protections for endangered and threatened species, respectively. For any federally listed threatened species in New York, contact this office. Additionally, section 7(a)(2) of the ESA, requires **Federal agencies**, in consultation with the Service, to ensure that any action they authorize, fund, or carry out is not likely to jeopardize the continued existence of listed species or result in the destruction or adverse modification of designated critical habitat.

For **non-federal projects**, those not authorized, funded, or carried out by a Federal agency, we provide technical assistance to individuals and other non-federal entities to assist with project planning to avoid the potential for “take”<sup>1</sup> or when appropriate, to provide assistance with their application for an incidental take permit pursuant to section 10(a)(1)(B) of the ESA.

**To avoid potentially impacting listed species or causing unauthorized impacts, we encourage project sponsors to ensure all requirements of the ESA have been fulfilled prior to finalizing project plans.** If you have any questions or require further assistance regarding threatened and endangered species, please contact the NYFO Endangered Species Program at 607-753-9334. Please refer to the above Project Number (if provided) or the Project Name in any future correspondence.

---

<sup>1</sup> Take is defined in section 3 of the ESA as harass, harm, pursue, hunt, shoot, wound, kill, trap, capture, or collect or to attempt to engage in any such conduct.